

MONTHLY MEMBERSHIP PROGRESS REPORT

District 35 I

Results as of: 8/31/2024

GMT:

LOCATION FLORIDA

GMT CA

Clubs			
RESULTS FOR 2024-2025			
QUARTER	NEW CLUB GOAL	NEW CLUBS	DROPPED CLUBS
JULY/AUG/SEPT	0	0	0
OCT/NOV/DEC	1	0	0
JAN/FEB/MAR	0	0	0
APR/MAY/JUNE	0	0	0

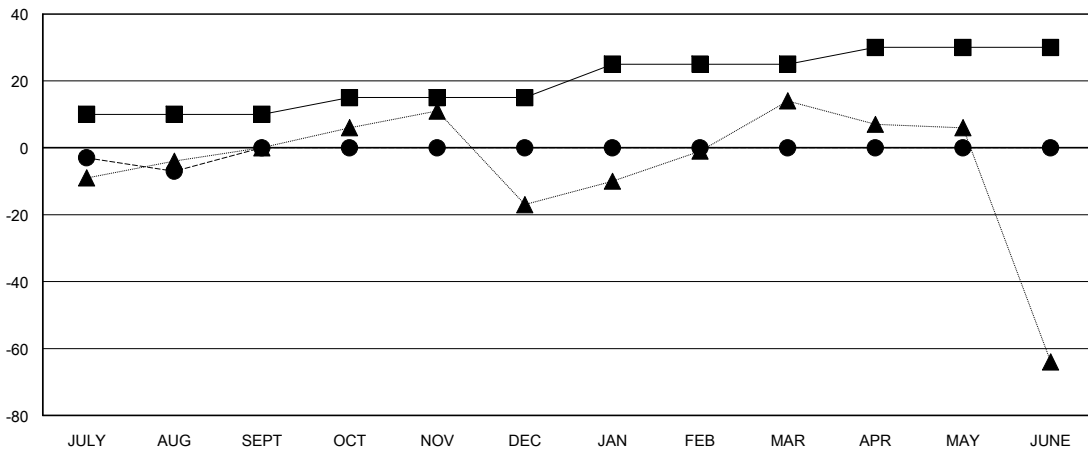
Members			
RESULTS FOR 2024-2025			
QUARTER	MEMBER GROWTH NET GOAL	MEMBER GROWTH ACTUAL	DROPPED MEMBERS ACTUAL (including transfers)
JULY/AUG/SEPT	10	30	28
OCT/NOV/DEC	5	0	0
JAN/FEB/MAR	10	0	0
APR/MAY/JUNE	5	0	0

GOALS AND ACTUAL NEW CLUBS CUMULATIVE



- - CURRENT YEAR GOALS FOR NEW CLUBS
- - CURRENT YEAR ACTUAL NEW CLUBS
- ▲ - LAST YEAR ACTUAL NEW CLUBS

GOALS AND ACTUAL MEMBERS CUMULATIVE



- - MEMBER GROWTH NET GOAL
- - MEMBER GROWTH ACTUAL
- ▲ - LAST YEAR MEMBERSHIP ACTUAL

DROPPED CLUBS: 0	10 CLUBS OF 38 ADDED 1 OR MORE NEW MEMBERS	GENDER DISTRIBUTION MALE 498 (48.68%) FEMALE 524 (51.22%)
DROPPED MEMBERS DECEASED 4 CLUB CANCELLED 0 OTHER 24 TOTAL 28	CLICK HERE FOR CUMULATIVE MEMBERSHIP DATA	TOTAL FAMILY UNIT MEMBERS 326 FAMILY MEMBERS PAYING HALF DUES 165